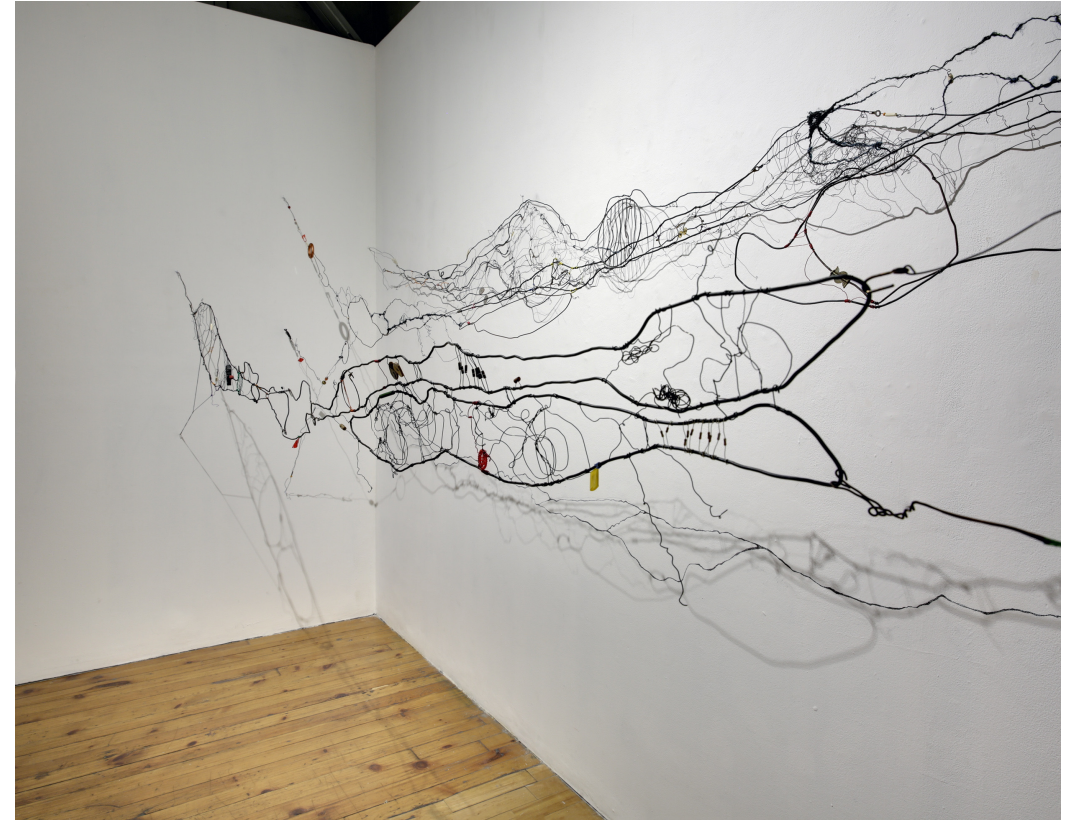


Lois Schklar

From There *The Princess is in her Fantasy Garden* 1980



To Here *Rain Gently Falling* 2018



Studio

West View



East View



Part 1: Materials and Collected Objects

1960's - 2020



Part 2: Sewing Techniques: The Challenge of “Learning” and “Unlearning”

1979- 2020

Learning to Sew
1979 – 1985

From There

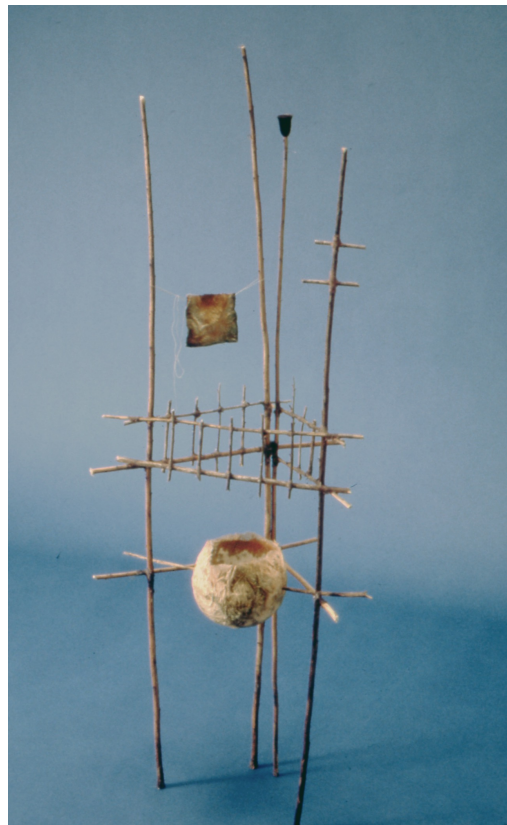


Playing: Twigs, Twig Sculpture, Fetish, Voodoo Dolls, 1983-1987

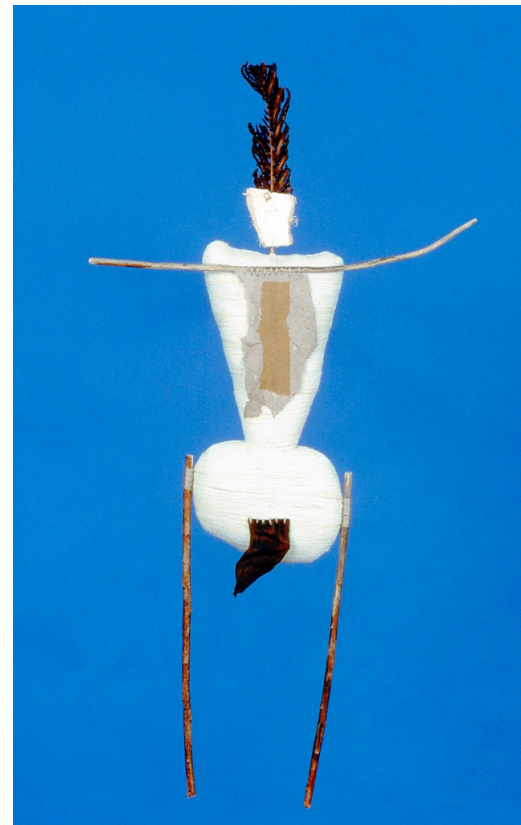
To Here



1983



1984



1986



1987

Part 3: Creating self-supporting fabric forms

1985 - 1998



To Here





Burlap Covered Bushes 1970-1980's



Rocks by the ocean 1980's



Rocks of Arcosanti 1987



The Mystery of the standing stones

To Here



1987



1988



1990

Part 4 : Recycling and Revisiting 1996-2020



Bowl Forms 1991-1993





Part 5 : Installations and Shadows

1982 - 2020

From There A Fairy Tale 1982



To Here: Collective Memories 1990

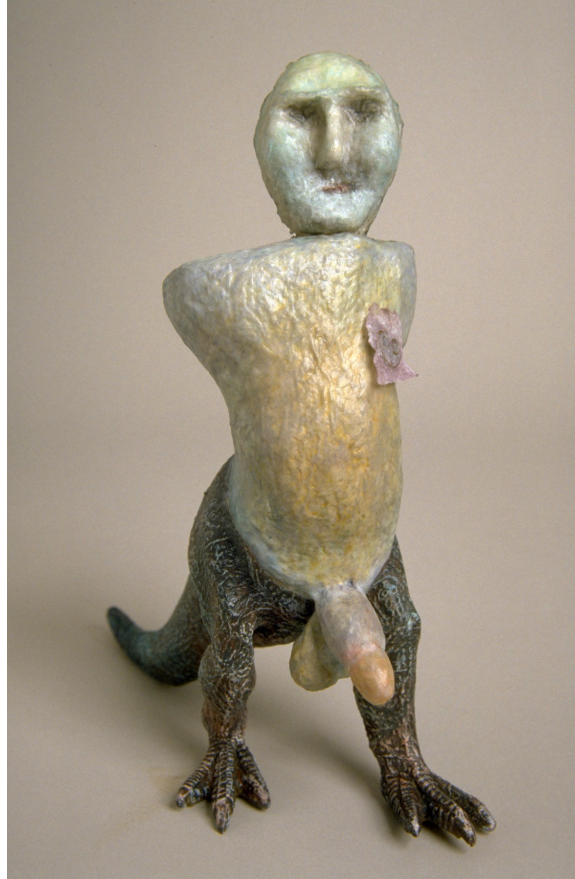




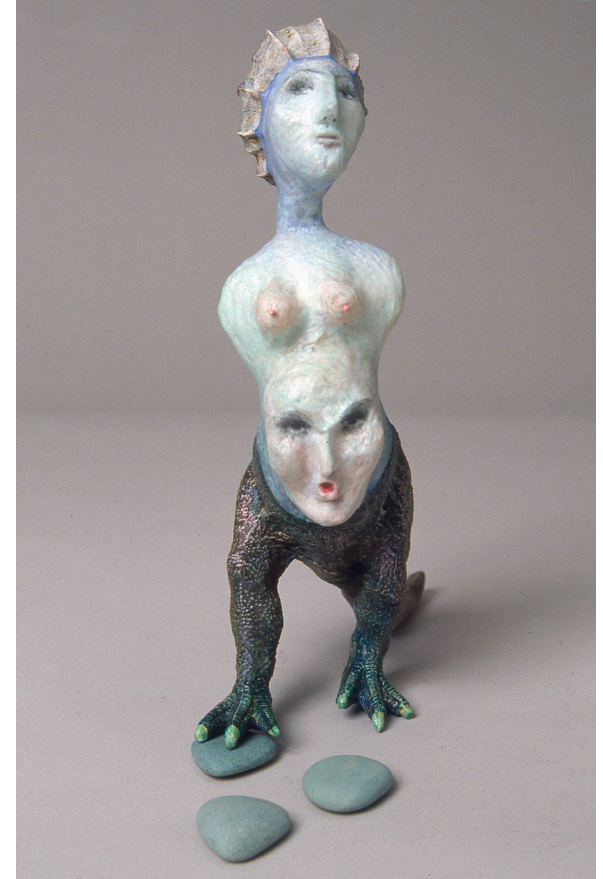
The Scream

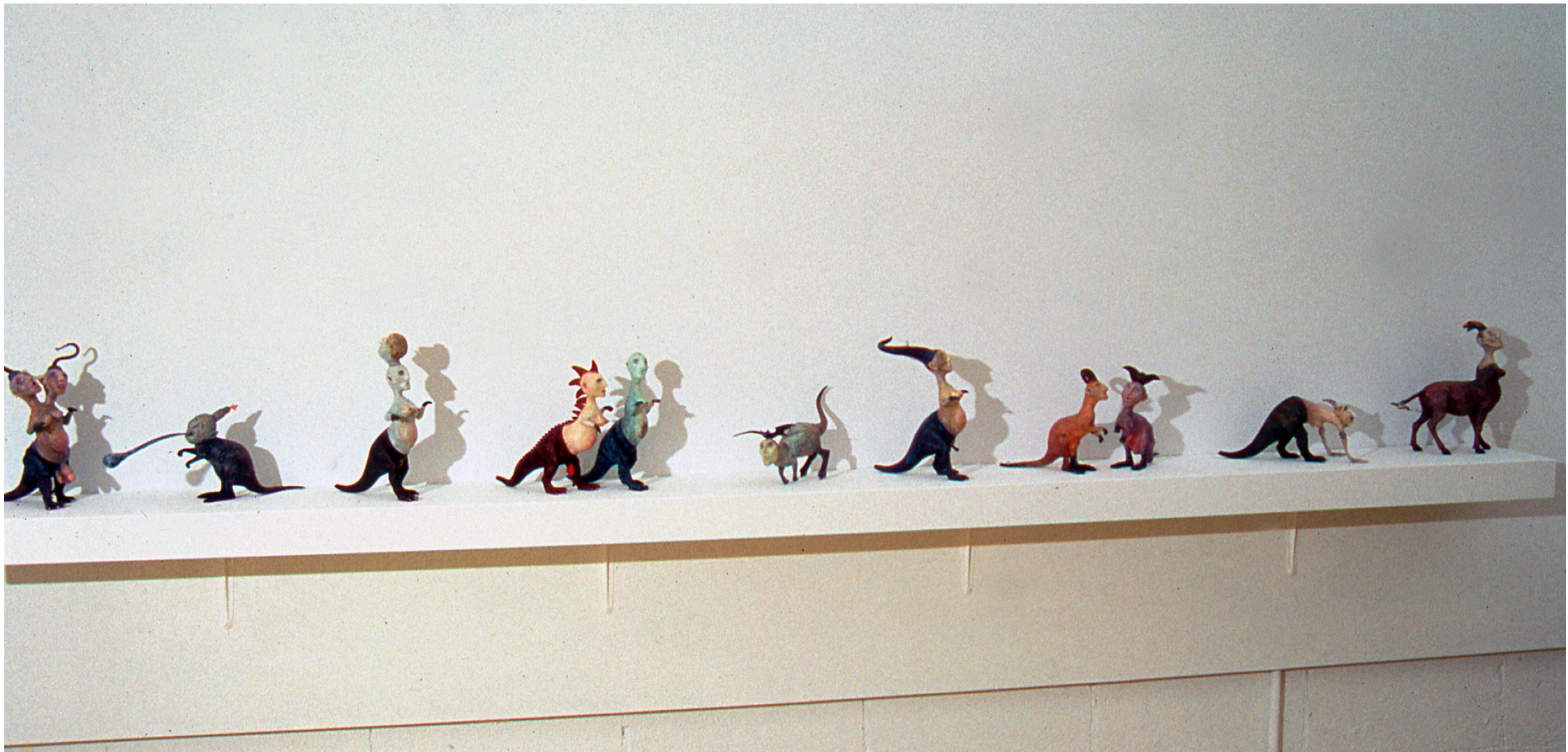


The General



On Becoming





Retirement (?) 2004



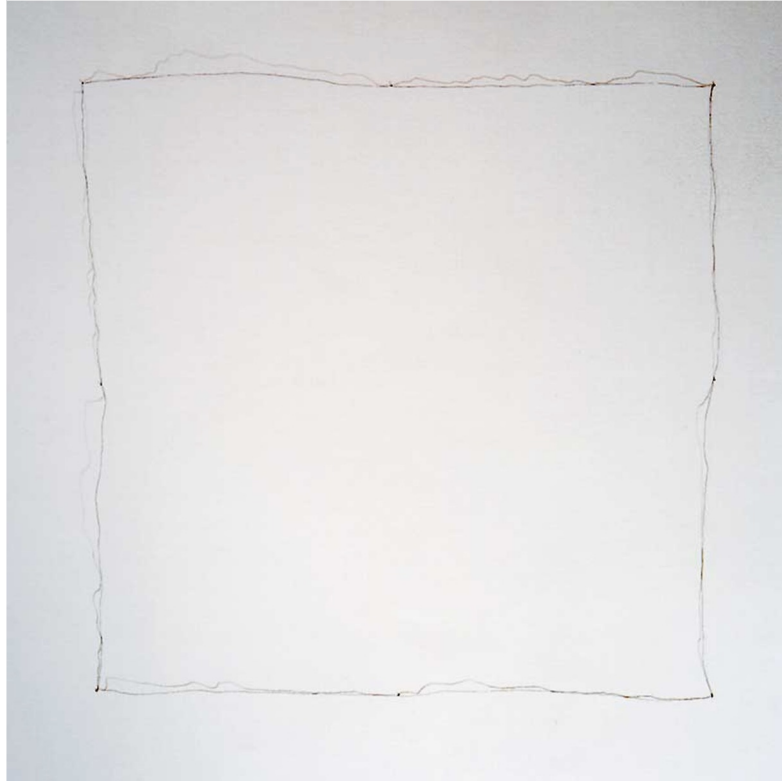
Shadows/Pathways/Tar Tracks



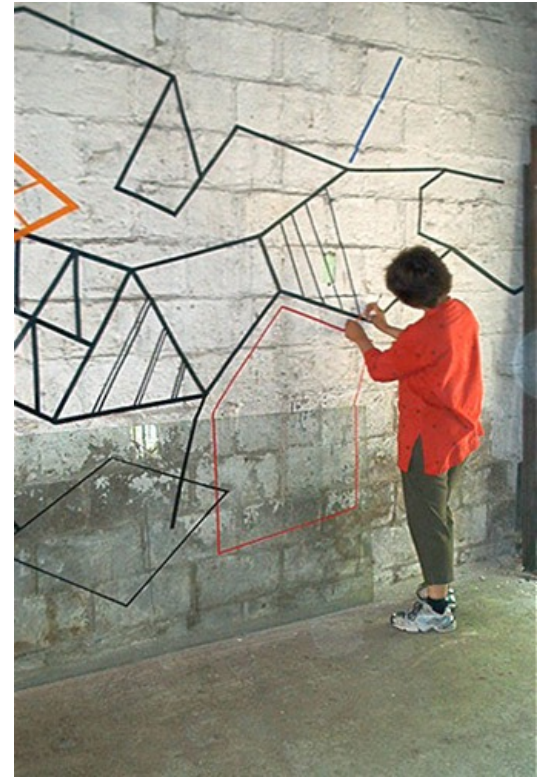
Sol Lewitt, Wall Drawing #146



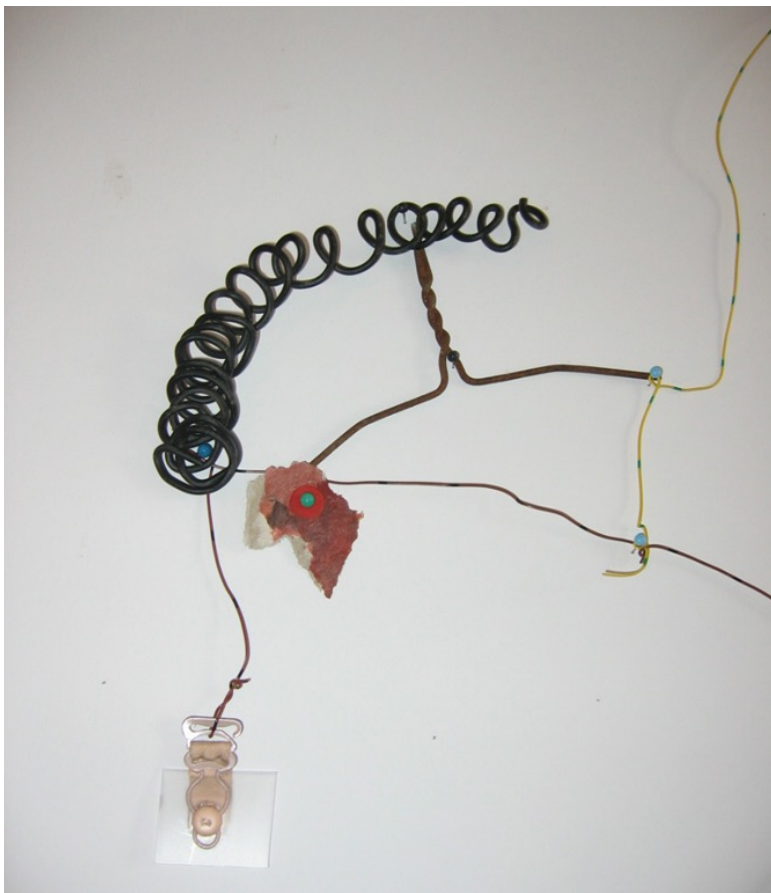
Richard Tuttle



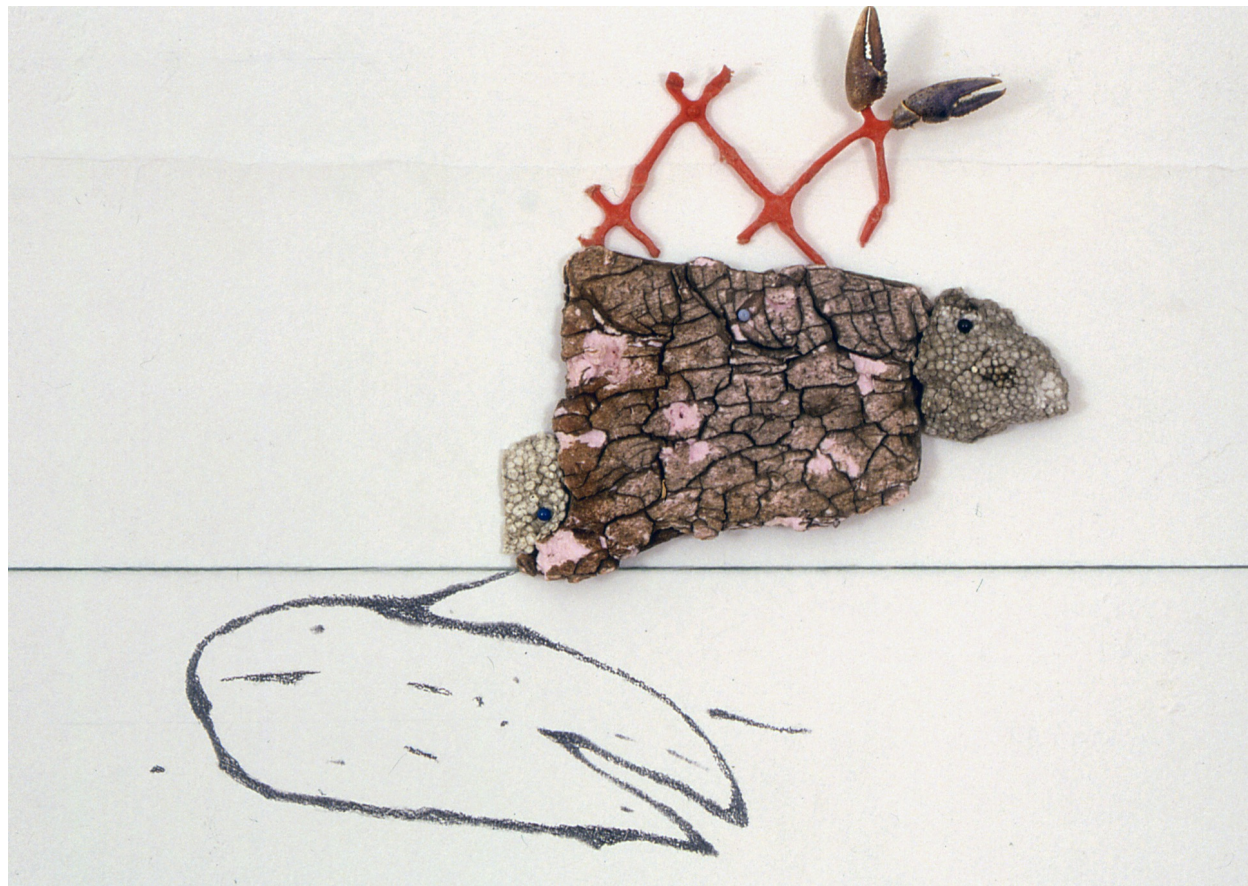
Samina Mansuri



Sketch 2005



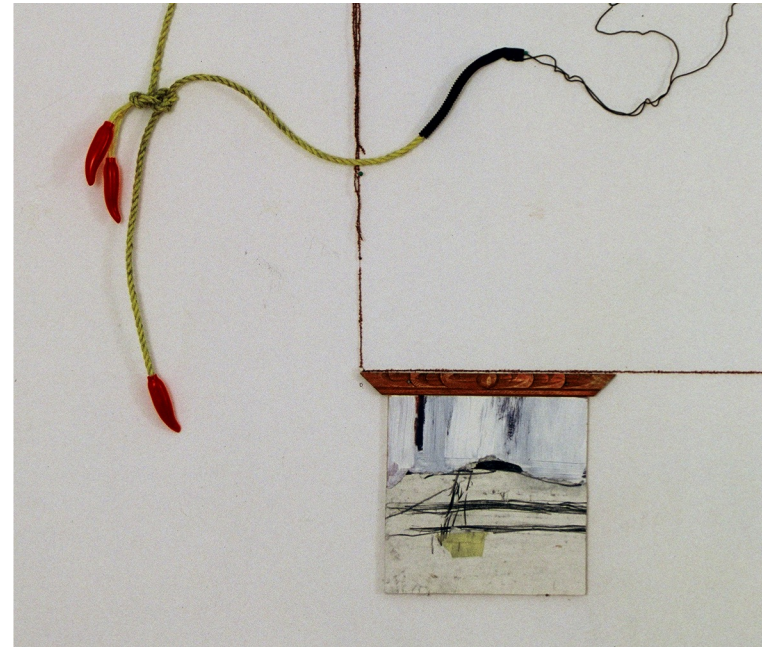
From "On the Beach" 2005



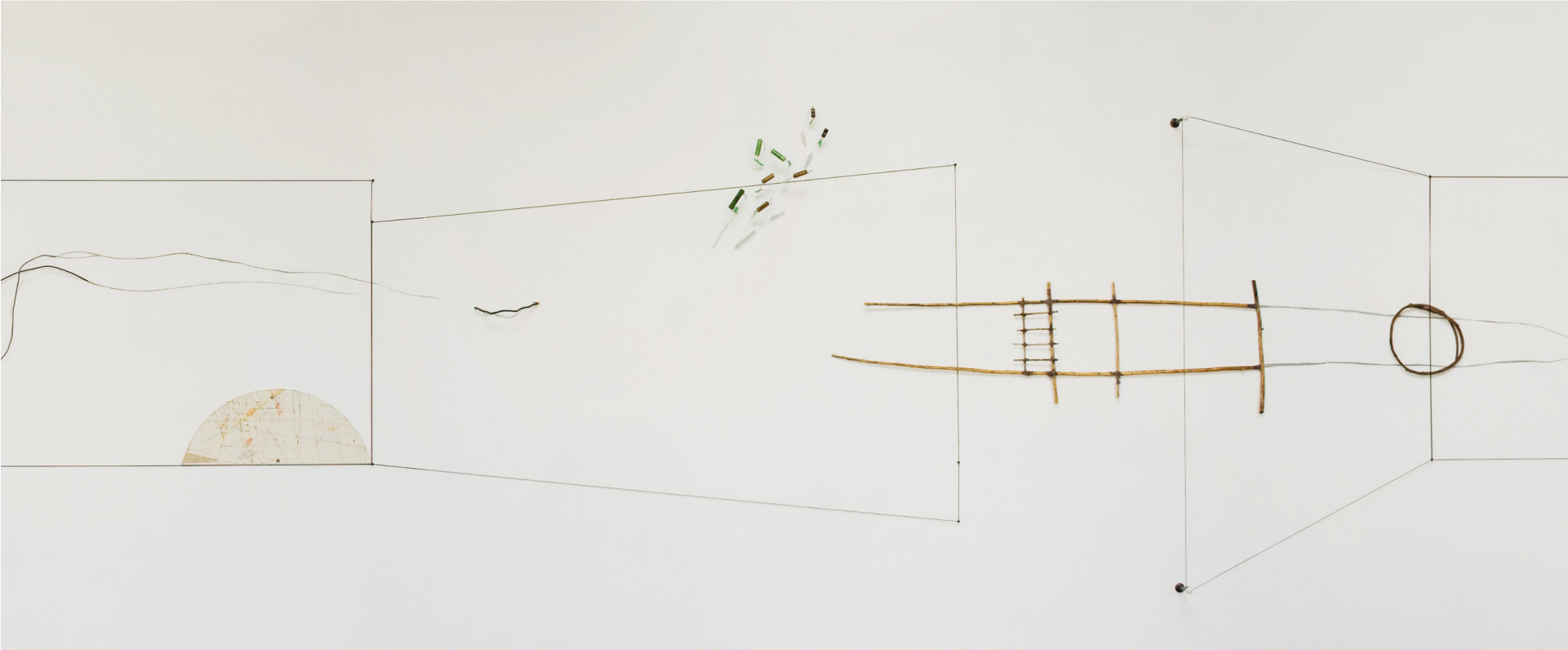
Familiar Territory #1: Redux 2007



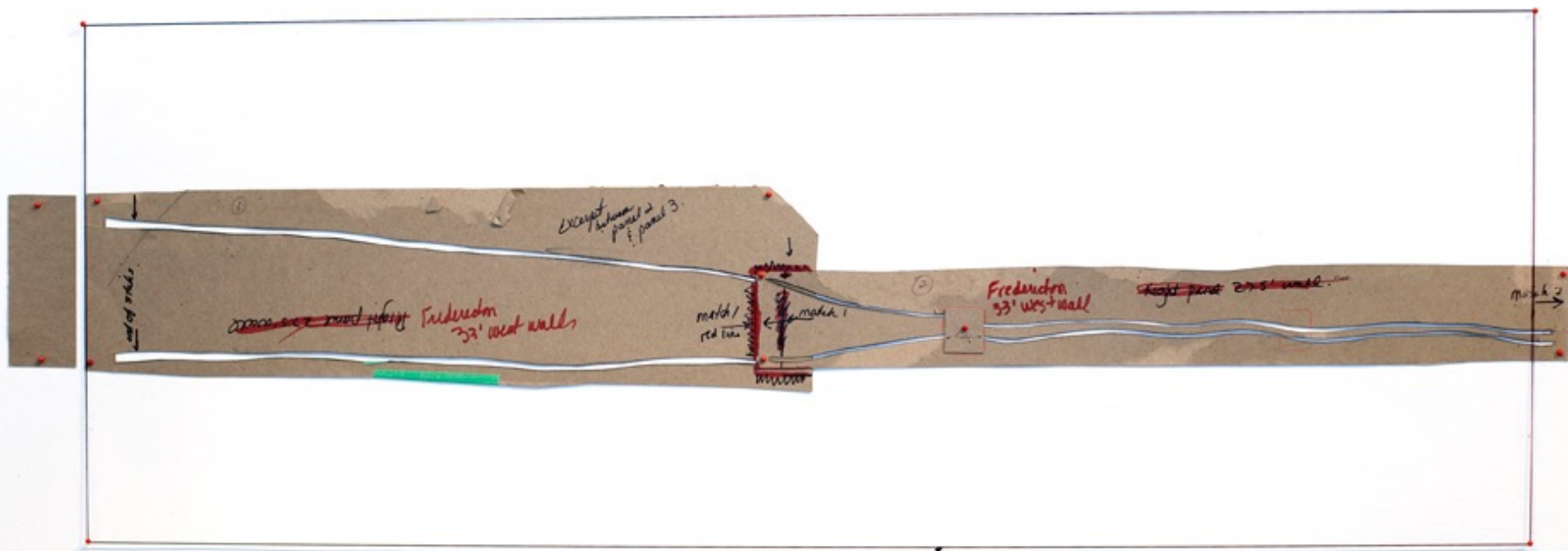
Familiar Territory Redux (2007) & Familiar Territory #1 (2005)



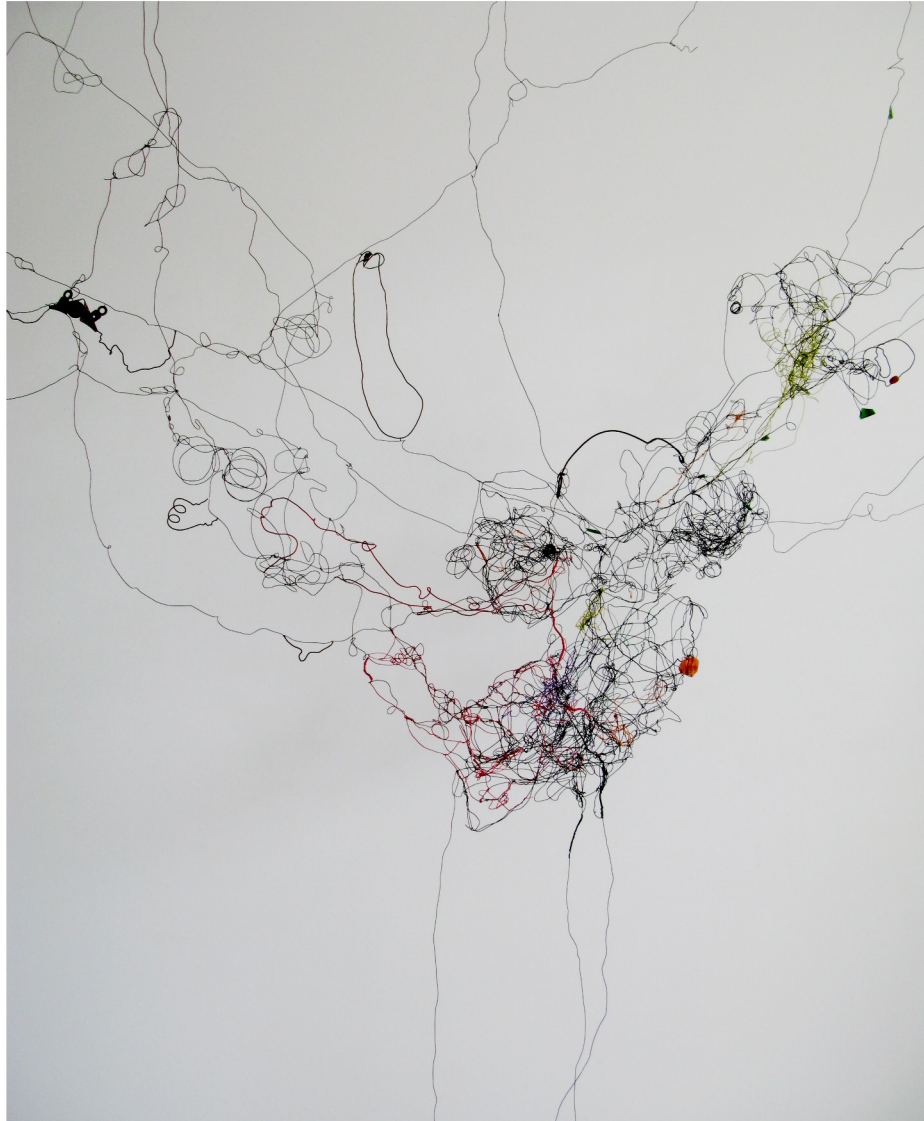
“The intersection or crossing of paths is always a point of decision.” 2008



“The Path prepares us to see and experience the space.”
Francis D.K. Ching, Form, Space and Order



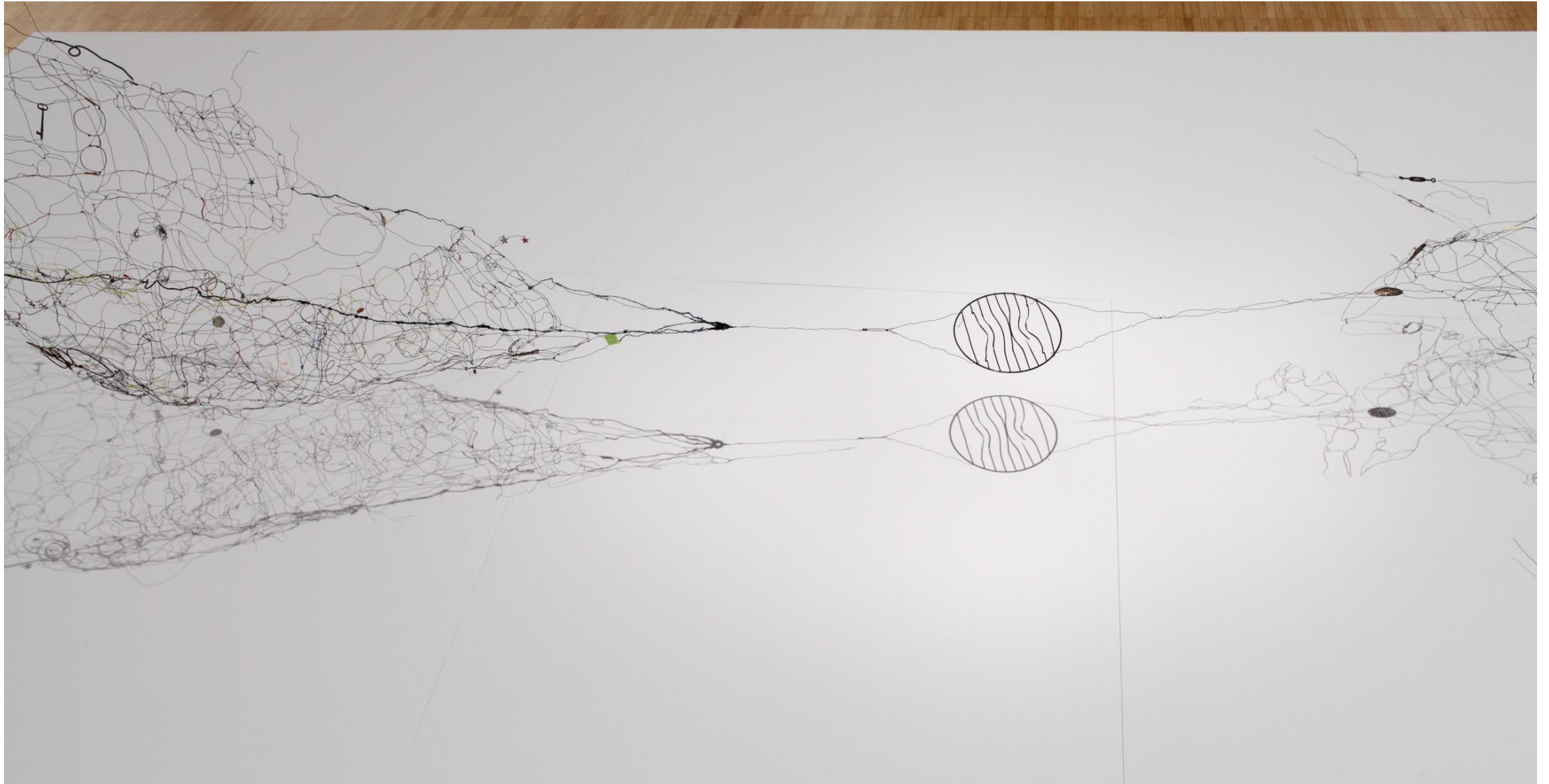
Experimenting with wire and magnets 2008-2009
Familiar Territory: Entangled 2010



Cascade 2011



Aerial View of 'Tethered memories Hung Low Beneath the Void' 2011



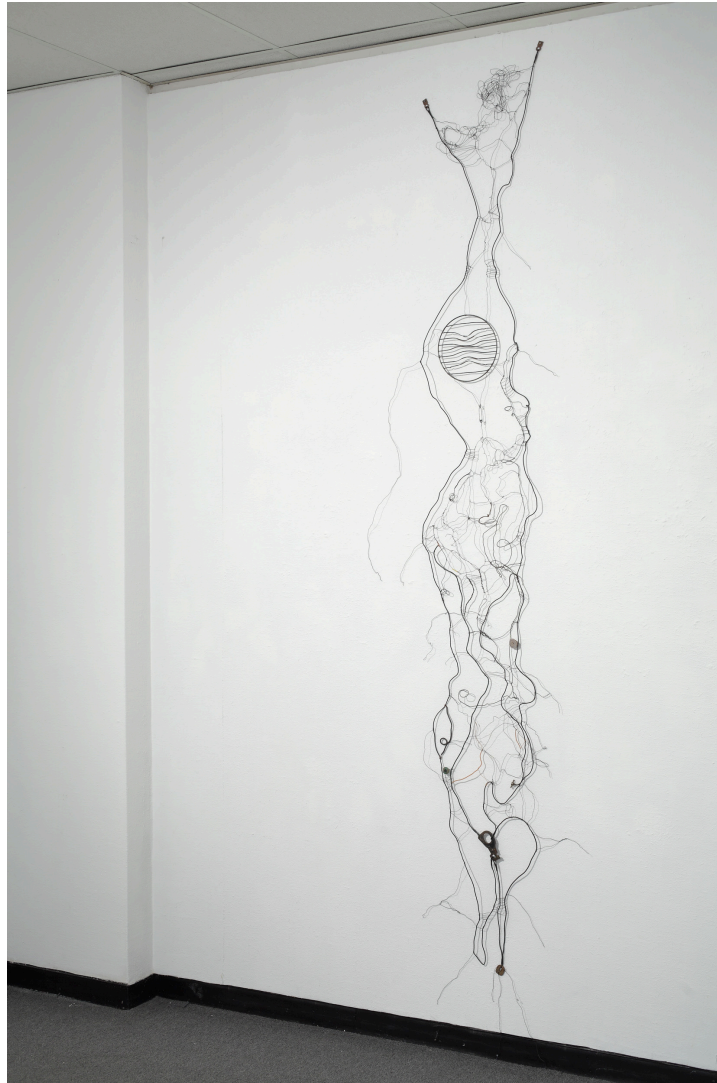
Detail View: Real and graphite shadows



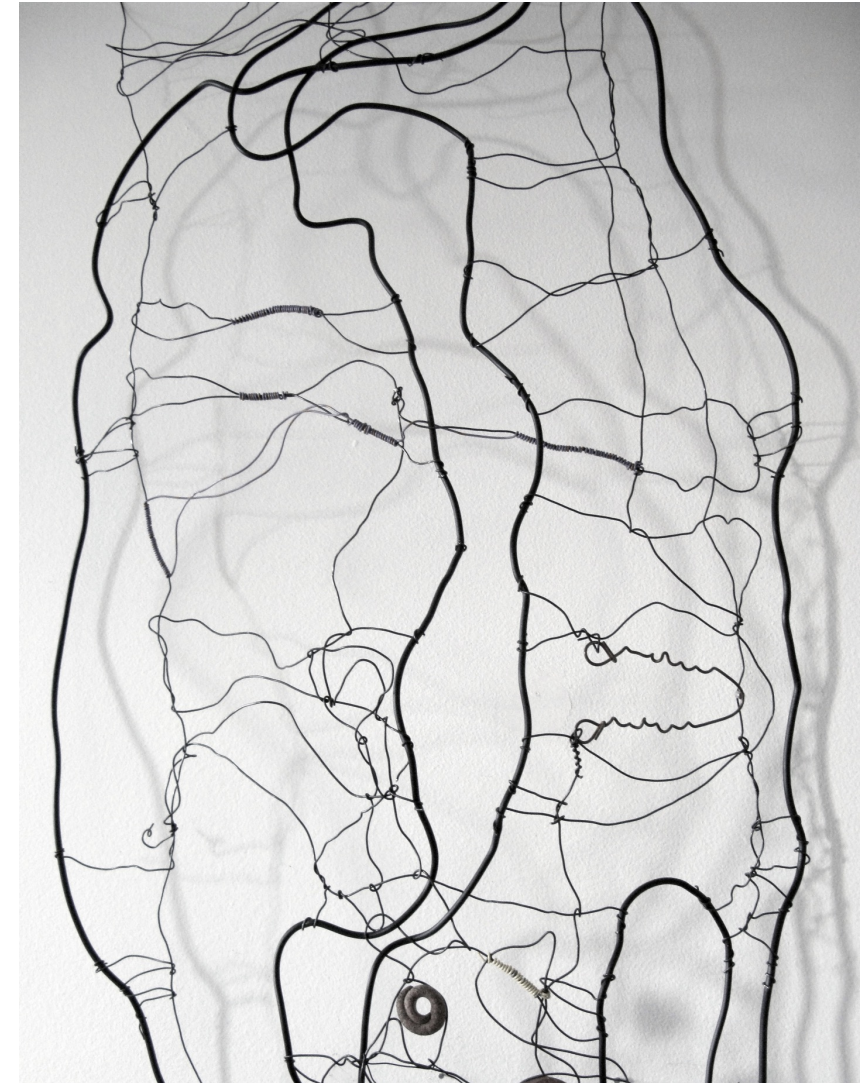
2012 Wire Installation in skylight



2013 Wire Installation on wall



Detail





Timelines 2017

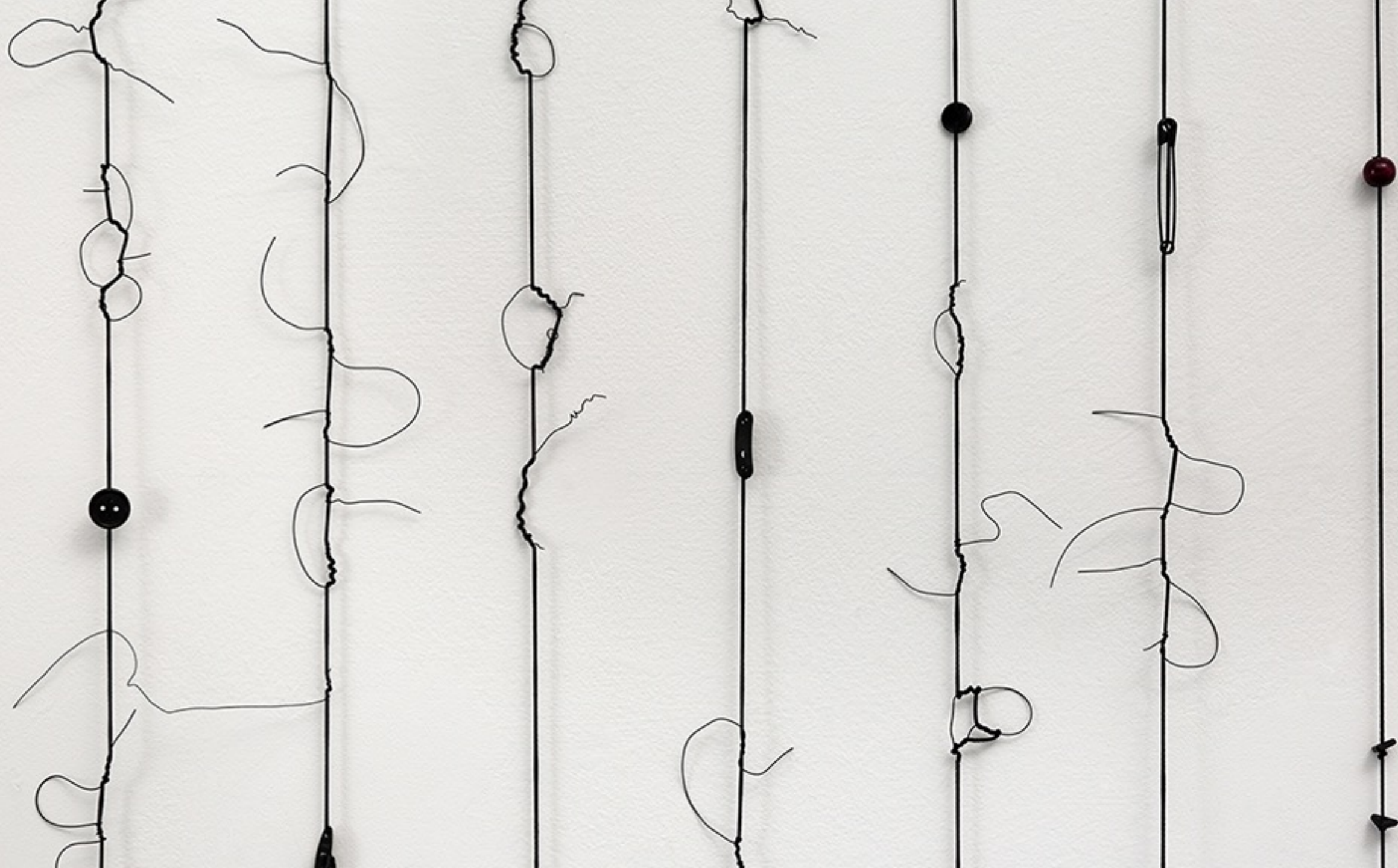


Leftovers #1, #2, #3 2016-2017

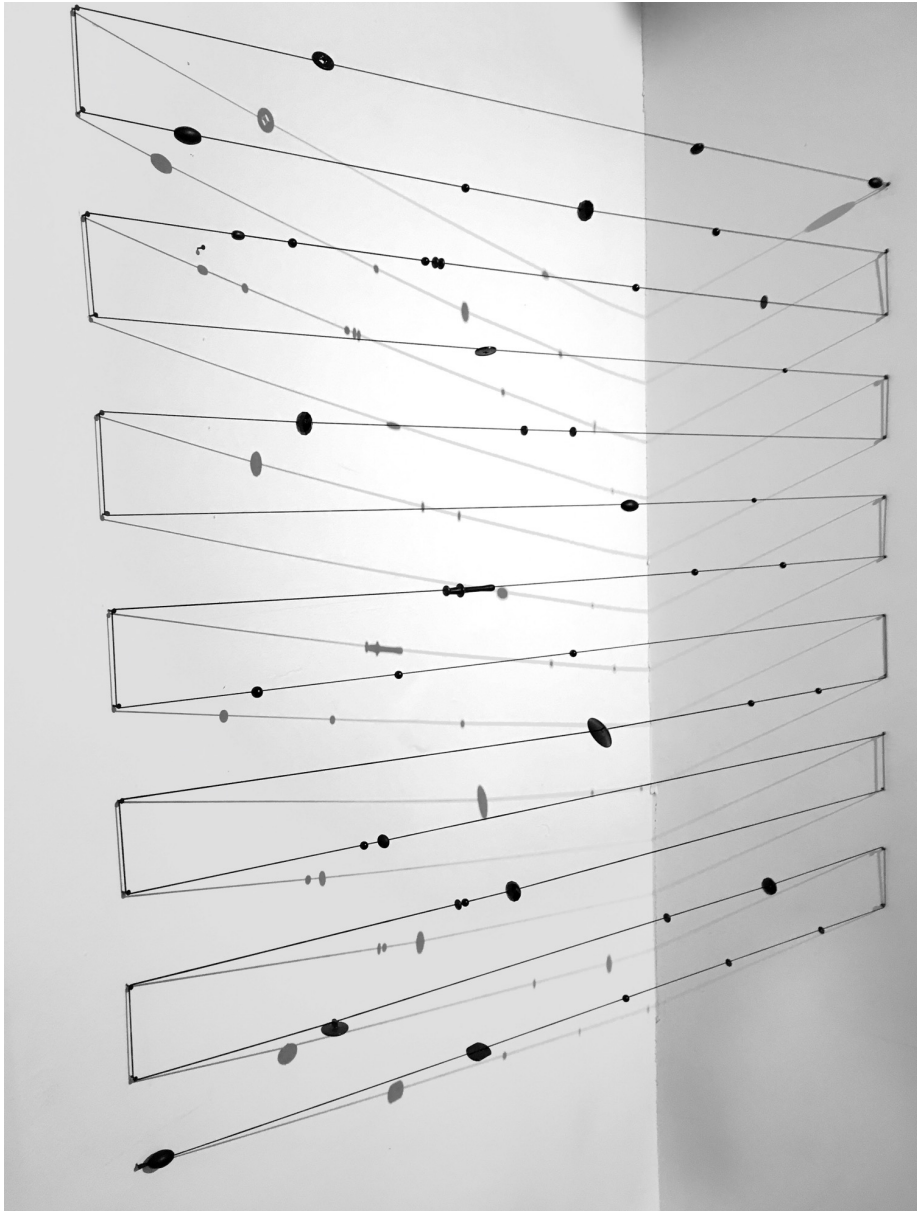




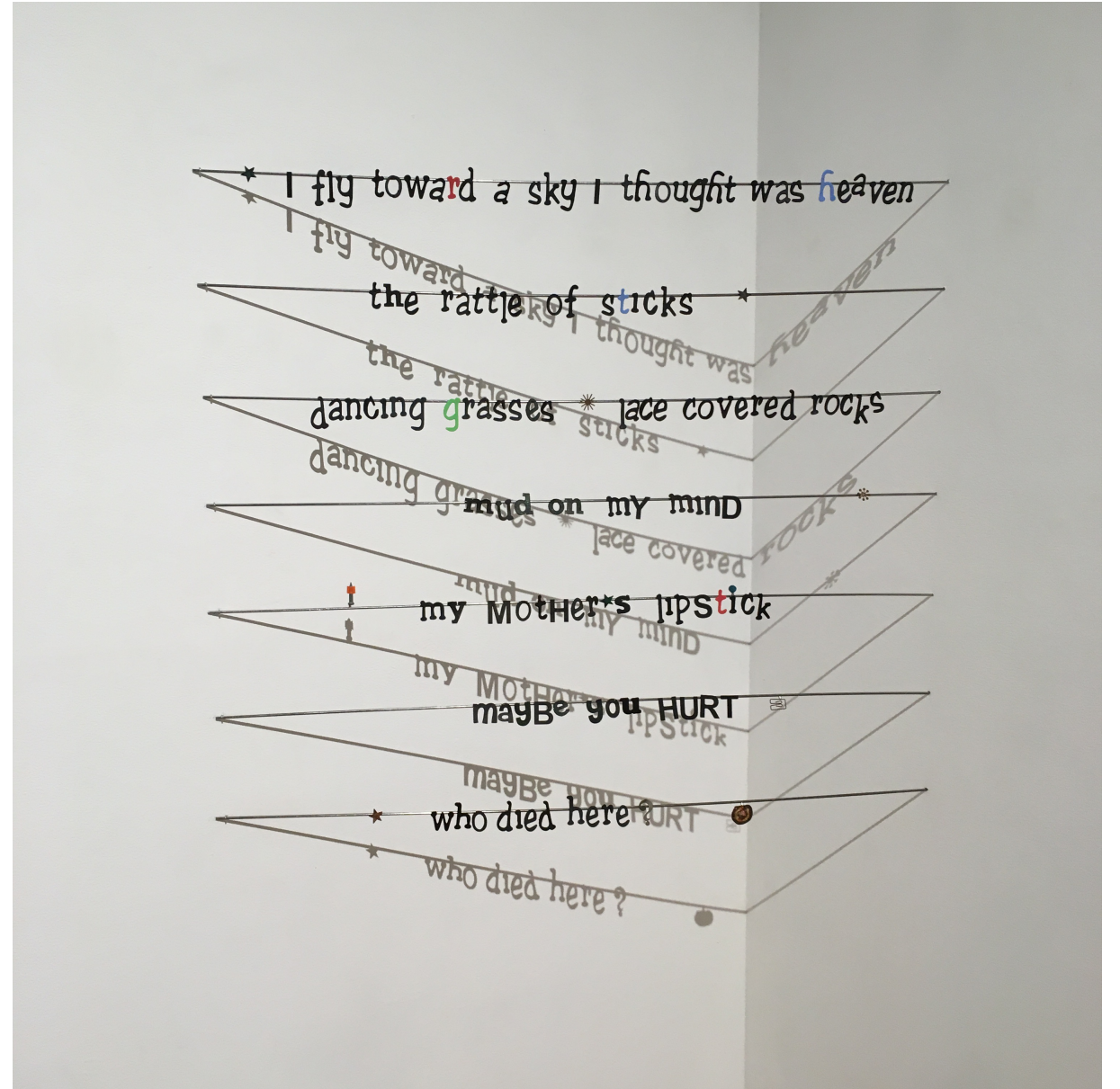
Timelines 2,3,4 2017

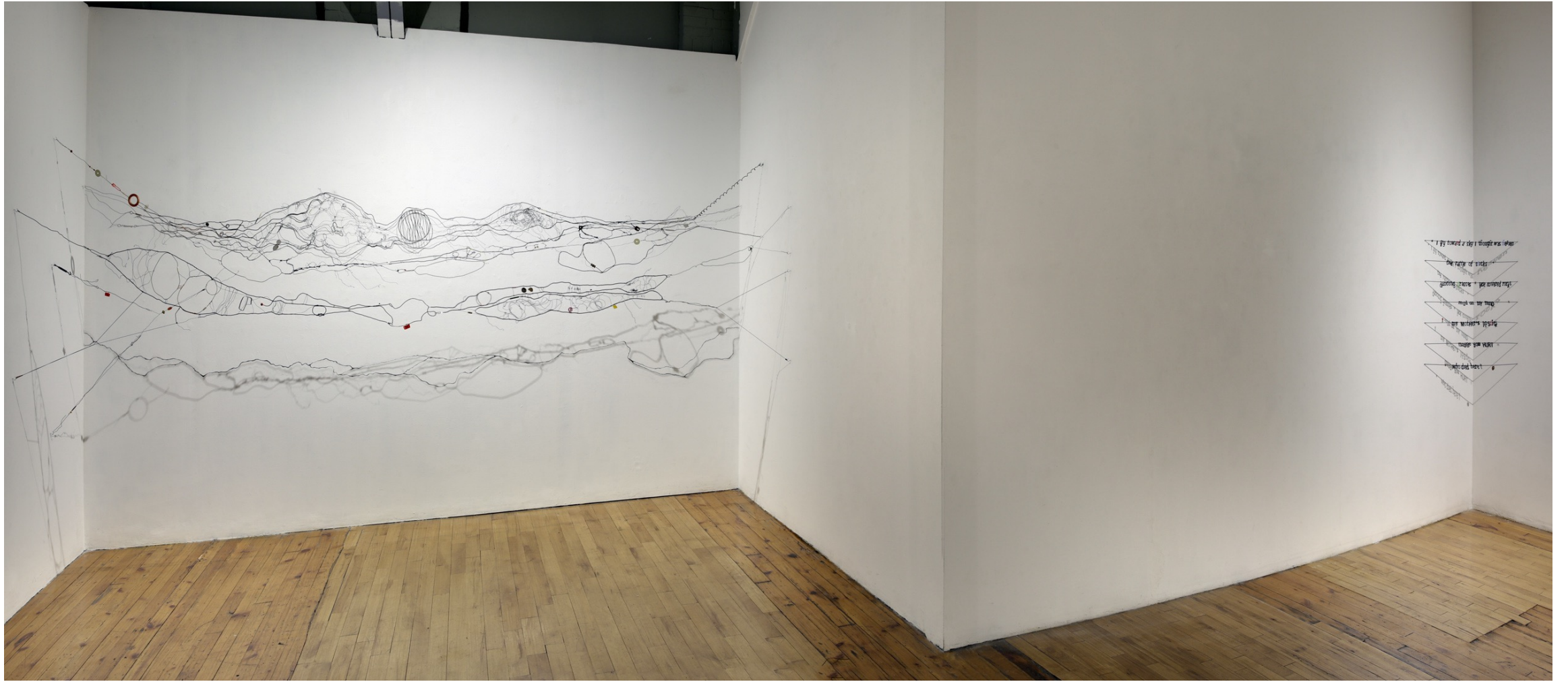


From Here Timelines 3 2017



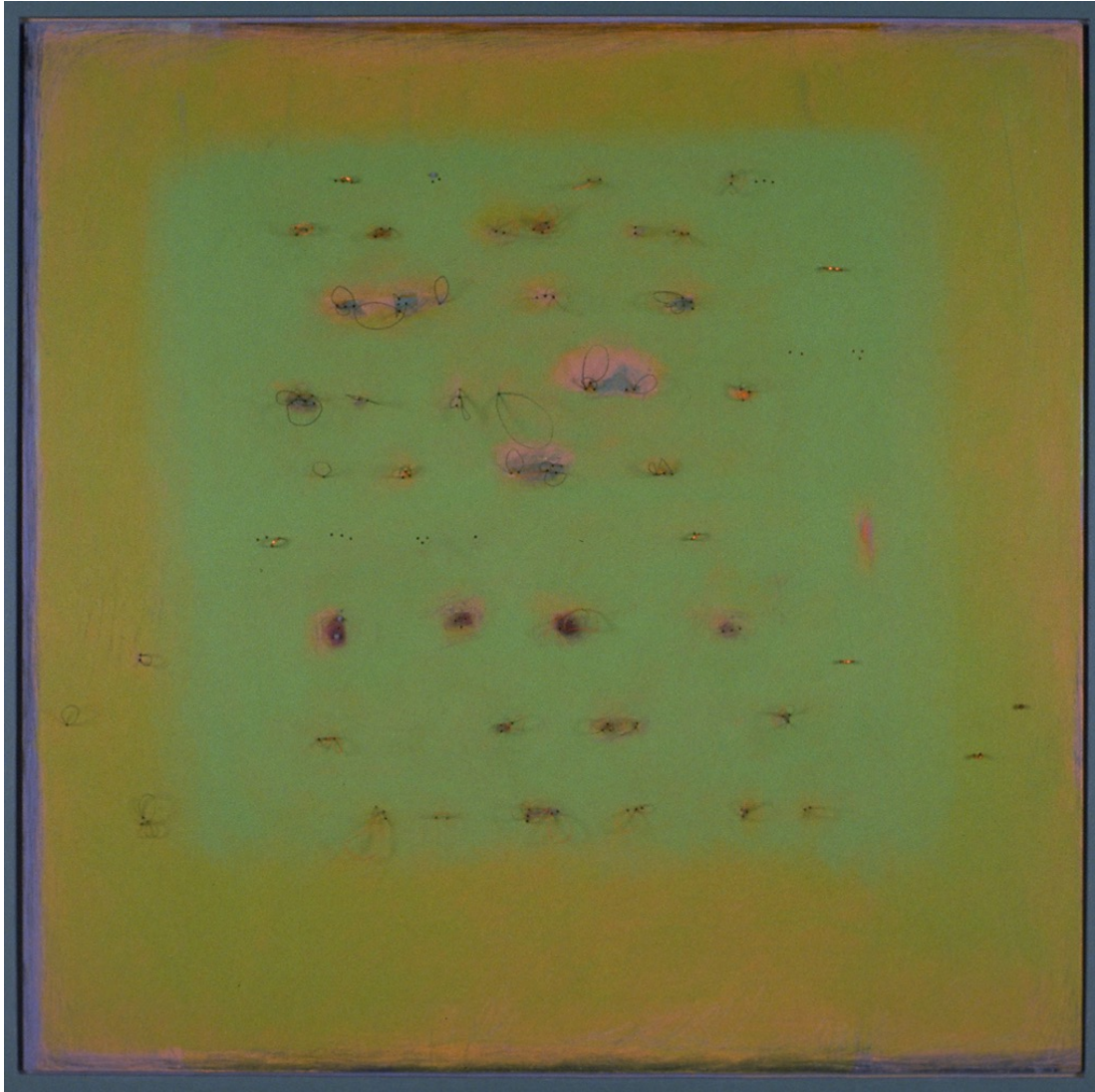
To Here Timelines: Poetry Excerpts 2018





FROM THERE

Land Language 2001



Drawing 2017



TO HERE







	D		E		F	
1		Hardware collection. For Found wood dolls. 1994.		Ceramic whistle from a set of three. Harbourfront flea. Date unknown		Jewelry backing (2009), charm (Courage My Love 1970's))
2		Sea sponge. Date unknown.		Altered Rusty Nail Harbourfront Flea Market. Date Unknown		Found Bottle Cap Collection. Hood. Date unknown.
3		Florence, Italy 2001 Wood ornament shop.		Key Harbourfront Flea Market. Date Unknown		Jewelry backing (2009), jewelry find intervention 2018
4		Dry Cleaner pin. Aberfoyle flea. 1990's		On The Beach find 2005.		Sea Urchin. Costa Rica 1987
5		Jewelry find (CML 1970's) Button (CML 1980's) intervention 2018		Found Bottle Cap Collection. Hood. Date unknown		On The Beach find 2005.
6		Found coiled wire		Plastic dolls foot. Flea market. 2003.		Rusty bedspring near the icebergs in St Anthony's, Nfld. 2011
7		Found Bottle Cap Collection. Hood. Date unknown.		Hardware collection. For Found wood dolls. 1994.		Found Bottle Cap Collection. Hood. Date unknown.
8		Tea bag (1986) with nicotine patch (2005)		Some kind of small pulley. Found object. Date unknown.		Plastic dragonfly. Trinity Bellwoods garage sale. Date unknown
9		Hardware. Date Unknown		Alphabet magnets 2013.		Found Bottle Cap Collection. Hood. Date unknown.
10		Holy rock from east coast. 2011		Rusty Lock. Aberfoyle Flea market. 1980's.		Halloween Collection. Dollarama 2003
11		Jewelry backing), Bead from "hippie necklace " SF 1979.intervention 2018		Magnet. Dollarama. 2010		Rusty Nail Harbourfront Flea Market. Date Unknown

Part 6 : Audience Interaction through Movement and Sound

1980 - 2019

Assisted Movement (Analogue Versions)

From There Jumping Jacks 1981-1986



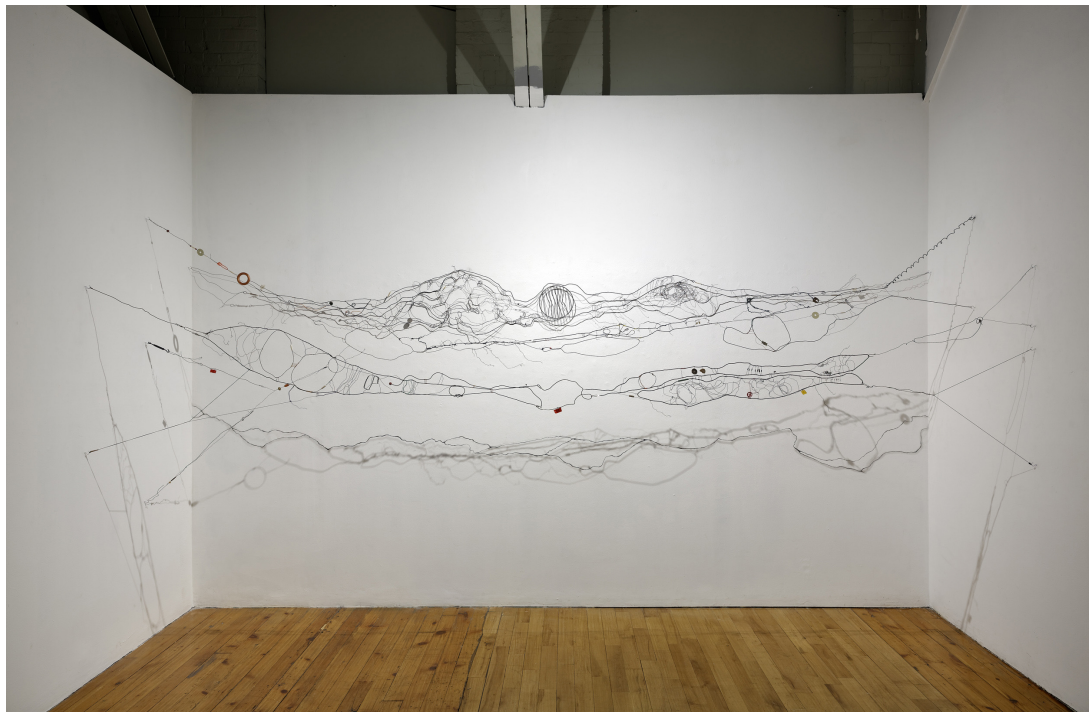
To Here Homage to Jim Dine 2019







From There



Rain Gently Falling

To Here



Waterfall





To Here 2019



